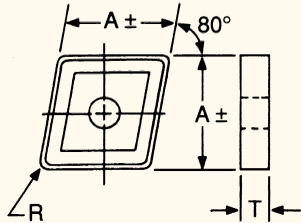


# Carbide Inserts

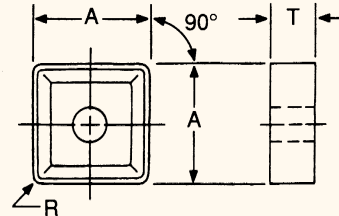
## Negative Rake Inserts

### CNMG — Used in M-Series, LX-Series, LP-Series



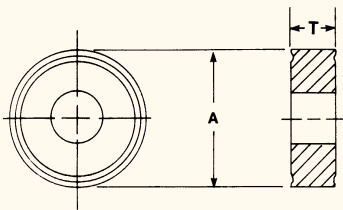
Insert	A (I.C.)	T	R
CNMG-431	1/2"	3/16"	1/64"
CNMG-432	1/2"	3/16"	1/32"
CNMG-433	1/2"	3/16"	3/64"
CNMG-434	1/2"	3/16"	1/16"
CNMG-542	5/8"	1/4"	1/32"
CNMG-543	5/8"	1/4"	3/64"
CNMG-544	5/8"	1/4"	1/16"

### SNMG — Used in M-Series, LP-Series



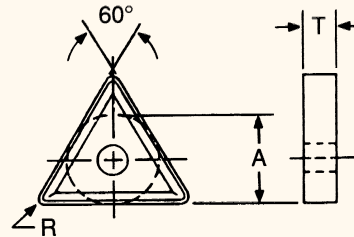
Insert	A (I.C.)	T	R
SNMG-322	3/8"	1/8"	1/32"
SNMG-323	3/8"	1/8"	3/64"
SNMG-432	1/2"	3/16"	1/32"
SNMG-433	1/2"	3/16"	3/64"
SNMG-434	1/2"	3/16"	1/16"
SNMG-543	5/8"	1/4"	3/64"
SNMG-544	5/8"	1/4"	1/16"

### RNMG — Used in M-series, LP-Series



	A (I.C.)	T
RNMG-32	3/8"	1/8"
RNMG-43	1/2"	3/16"
RNMG-54	5/8"	1/4"

### TNMG — Used in M-series



Catalog #	A (I.C.)	T	R
TNMG-222	1/4"	1/8"	1/32"
TNMG-321	3/8"	1/8"	1/64"
TNMG-322	3/8"	1/8"	1/32"
TNMG-323	3/8"	1/8"	3/64"
TNMG-324	3/8"	1/8"	1/16"
TNMG-431	1/2"	3/16"	1/64"
TNMG-432	1/2"	3/16"	1/32"

- C2/C5 grades with and without TiN coating
  - Diamond tipping available
- Blanket order pricing available
- We purchase scrap carbide

